

SEED CORN HARVESTER



8840



8840

Our dedication and partnership with the seed industry continues with the introduction of the future in seed corn harvesting. Introducing, the Oxbo 8840 Seed Corn Harvester. Our new seed corn harvester has increased productivity, improved trash removal, minimized kernel loss and improved operator comfort.

Field Productivity

- Totally new cleaning system delivers cleaner loads resulting in more crop per load with less trash; saves on hauling
- Delivers up to twice the productivity of previous harvester models

Gentle Conveyance

- Proven SoftTouch technology utilizes an all rubber conveyor for minimal kernel loss
- Exclusive SoftTouch lift conveyor gently conveys corn to belted product conveyor reducing ear to ear impact
-

Technology and Innovation

- YieldTracker collects yield data for agronomic analysis
- Steer-By-Stalk ensures better on-row performance and reduces operator stress
- FleetCommand telematics transmits harvester performance and settings in near real time for continuous monitoring

Effective Picking System

- Utilizes IntelliClean two-part cleaning system for the cleanest loads
- 65 inch feeder house evenly conveys the heaviest crop

Operator comfort

- Rear engine location means a balanced machine with a quieter cab
- Panoramic view in a luxurious cab

Power

- Up to 550 hp available in the Scania Tier 4F engine package
- 6 cylinder engine boasts improved fuel economy to minimize ownership cost

The Oxbo 8840 delivers on the things you need most from your seed corn harvester: Increased productivity, powerful harvesting in the toughest conditions, improved cleaning, greater fuel efficiency, less kernel loss, integrated technology, in a comfortable, modern cab.

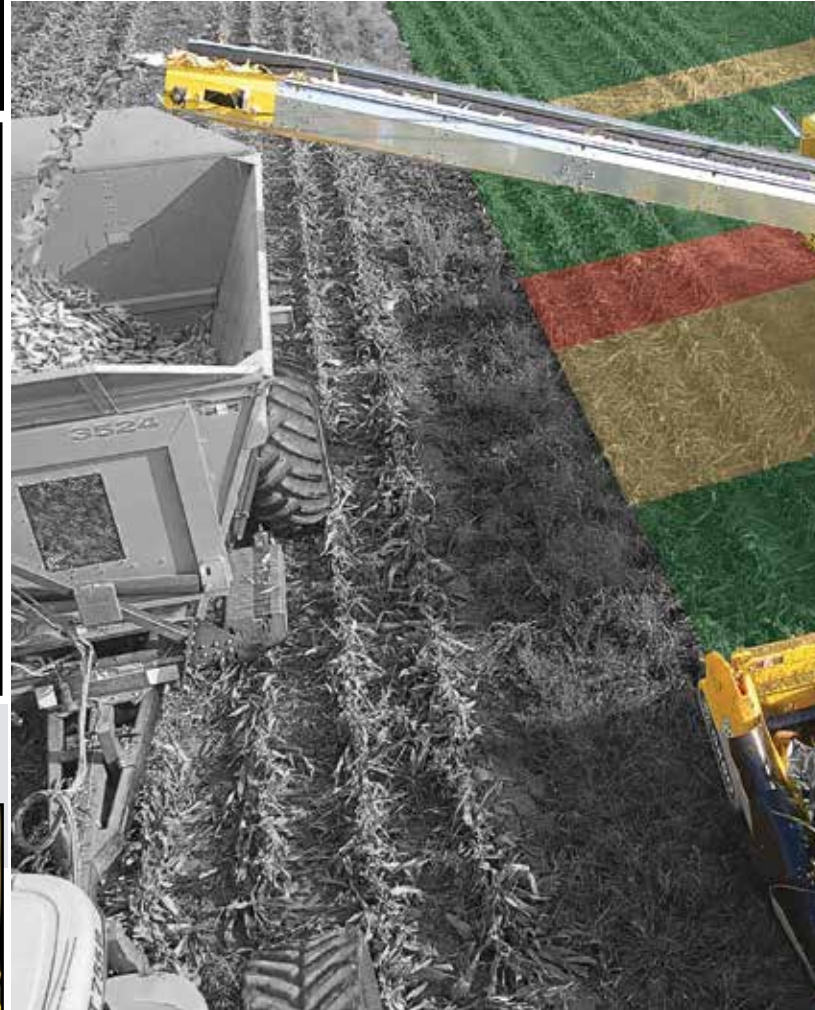
At Oxbo, we stand behind our equipment and continue to build our reputation as the global leader in seed harvesting solutions.



Cleaner Loads:
Saves unloading time at the plant



Powerful Suction Fan: Key component of *IntelliClean*, two-part cleaning process



Easy Access Panels: Maximize access to harvester components

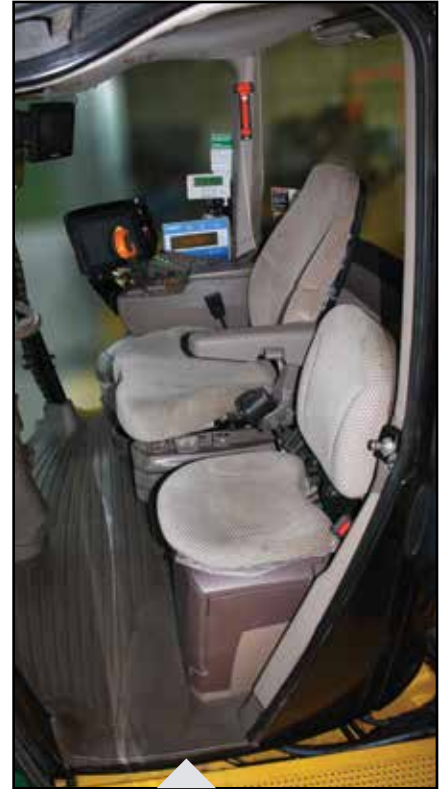
OxboConnect:
Support at your fingertips.
World-class online parts, service and support system



SoftTouch:
Gentle crop handling through an entirely belted system



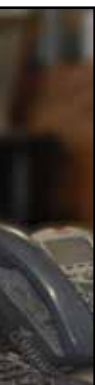
IntelliClean:
Two part cleaning system gently conveys the cleanest crop



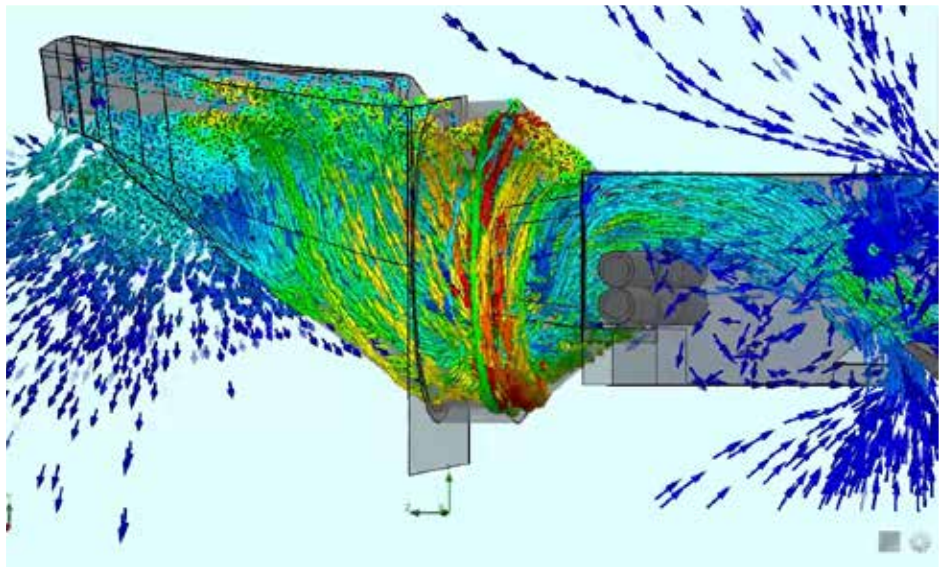
Quiet, Spacious Cab:
Luxurious modern cab with panoramic view



Serviceability:
Centralized grease banks and easy access locations



Support: Our mobile support team keeps you running with parts and service where and when you need it



Laminar Airflow: Evenly distributed airflow ensures consistent cleaning performance



Clean Conveyance: The combination of the IntelliClean cleaning system and SoftTouch conveyance provide the cleanest crop for the most efficient harvesting

Rugged design: Easily handles a 16-row folding corn head for fold-and-go transportability



Convenient: Easy access to the hydraulic pumps for safe servicing





Oxbo International
100 Bean Street
Clear Lake, WI 54005

Visit our website at
oxbo.com



715.263.2112

800.628.6196

SPECIFICATIONS

Transport dimensions

Length with header:	48ft 10.75" (14.9m)
Length (machine only):	27ft 4.8in (8.35m)
Width (front axle):	17ft 4in (5.3m)
Width (rear axle):	12ft (3.7m)
Height:	13ft 6in - 18ft 8in (4.1m - 5.7m)
Maximum Working Height (to top of conveyor):	18ft 8in (5.7m)

Tires

Front:	650/65R42
Rear:	LSW750/60R30

Engine

Engine:	Scania DC13L Tier 4F
Horsepower:	550hp @ 1850rpm

Ground Speeds

Max road speed:	23.5 mph (40.2 km/hr)
Max field speed:	10 mph (16.1 km/hr)

Turning Radius

Turning radius:	10ft 4in (3.1m)
-----------------	-----------------

Tank Capacities

Fuel:	375 gallons (1,419L)
Engine Oil	12 gallons (45.4L)
Diesel exhaust fluid (DEF):	18.5 gallons (70L)
Hydraulic fluid:	150 gallons (567.8L)
Cooling System:	20 gallons (75.7L)